



General Briefing notes

- The separation altitude between 2D and 3D scoring in this event is 2500 ft MSL
- In this competition we use UTM WGS84. The Coordinates will be given in 4/4 Format (XXXX / XXXX) with Altitude in ft MSL. Pilot declared Coordinates must be given with Altitude in ft. In case of a missing altitude for the declared coordinate we use the last valid Goal declaration for this task.

Official CLP's and CLA's

CLA	CLP	coordinates	
CLA1	CLP1	3034	0457
CLA2	CLP2	2159	1891

PZ's

PZ	Radius	Altitude	coordinates		color
	meter	feet			
PZ10-12			See map		yellow
PZ20	150	2200	3839	0534	red
PZ21	150	2200	3843	0485	red
PZ22	150	2200	3842	0434	red
PZ23	150	2200	3812	0346	red
PZ24	700	2200	1945	0733	red
PZ25	300	2200	3877	0944	red
contest area		7500	contest area		blue

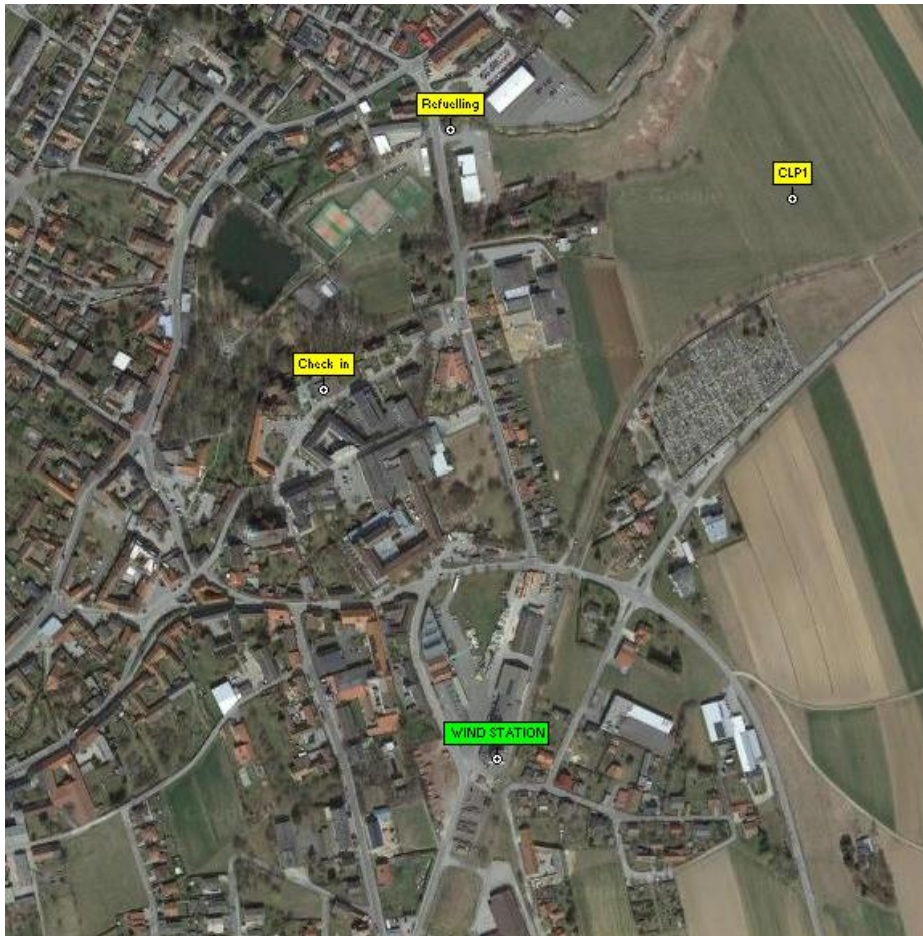
- Blue and red PZs are excluded from the competition area - declaring or creating valid waypoints in these areas is not possible

Taskbriefing times: 05:00am / 05:00pm LT

Briefing room will be open 15 minutes before the task briefing time.

Two seats will be prepared per team. Audience is welcome in the back as long as they don't noisy.

- Weather station Gross-Siegharts with actual wind data:
<https://www.wetter-hausruckviertel.at/siegharts%20kurzuebersicht.htm>



- *Jury members*

Jury president is permanent present – 2 members (1 pilot, 1 official) are asked in the general briefing

- *Marker handling: 6 markers per competitor will be issued at the general briefing. The status of placed markers can be seen via WMF. Markers recorded by the measuring team are on your table before the next briefing Lost Markers will be charged by 20 EUR per Marker Markers with colors and electronic marks with numbers not mentioned in the task data are considered “unauthorized marker” for that flight as per rule 12.5.*



Orange/yellow/green/blue/pink/brown

- Recall will do by messaging system and, if possible, on-airband radio on 122.255MHz. The recall message will be copied to the Electronic Notice Board (ENB) as soon as possible.
- Flight report form (FRF) via WMF; directly after your landing; mandatory infos: starting side and time, landing side and time, general comments to the flight and your observations
- Landowner permission: envelope on grass/harvested field is ok without LP
- Be careful with your burner in the nearest of harvested fields!!
- questions/clarifications for result
You can ask the scoring team about details or questions to scoring. Official times are running.
- Complaint / protest
Only to: Christoph Fraisl – event director
Goran Grgic – assistant director
Written form and signed, via paper or e-mail.
They will only note a good reception, no acceptance.

Join the pilot WhatsApp group with this QR-Link



08.08.2025
Christoph Fraisl, ED